



IVINSON MEMORIAL HOSPITAL
FOUNDATION | 

ANNUAL REPORT

FISCAL YEARS 2020•2023

40 YEARS OF SUPPORT AND COUNTING

This past year, the Ivinson Memorial Hospital (IMH) Foundation celebrated its 40th anniversary. Formed in August 1982 by seven community members to establish a philanthropic branch of IMH, the Foundation focuses on fundraising to improve the quality of healthcare for the residents of Albany County and its diverse population of students, community members, and those traveling across Wyoming.

Over the years, the IMH Foundation has committed nearly \$20 million to Ivinson Memorial Hospital, funding new equipment, capital construction projects, patient services, as well as scholarships and awards for IMH employees.

**\$20
MILLION**

OVER 40 YRS
SUPPORT
TO IMH

Mission:

HELPING IVINSON PROVIDE THE
BEST CARE TO OUR COMMUNITY.

New Beginnings

Dear Friends,

I'm excited to share with you this report that provides a retrospective of the Foundation's work supporting Ivinson Memorial Hospital over the decades, showcases our recent accomplishments, and provides an overview of the Foundation's current financial strength.

Looking to the future, we present the new initiatives that will help IMH withstand the future trends and market forces affecting rural hospitals and their ability to survive the changing healthcare environment. IMH has earned the recognition of being one of the nations' top 100 community hospitals and together we can ensure IMH maintains that status.

We would like to restate our sincere thanks for your ongoing support of the many milestones we have achieved over the years. Fulfilling our mission not only helps Ivinson Memorial Hospital, but also it ensures that everyone in our community has access to quality healthcare.

Thank-you for your continued support and commitment to Ivinson Memorial Hospital and to our friends and families in Albany County and the surrounding area.



Sincerely,

Shannon Polk

Shannon Polk, ED
EXECUTIVE DIRECTOR

IMHF
STAFF



Shannon Plumb
FISCAL
COORDINATOR



Tina Walrath
DEVELOPMENT
OPERATIONS
COORDINATOR

CONTENTS

5 LOOKING BACK: MAJOR PROJECTS

- 6 Meredith and Jeannie Ray Cancer Center
- 8 Dialysis Unit
- 9 Marguardt Garden
- 10 Guest House
- 12 Employee Assistance Program
- 12 The Giving Tree

13 LOOKING BACK: MAJOR EVENTS

- 14 La Grande Fleur
- 18 Groundbreaking Ceremony
- 20 Hospital Week
- 21 1973 Capsule Opening
- 22 Sportsmans Raffle
- 24 Health Links Golf Tournament

25 LOOKING FORWARD: NEW DIRECTIONS

- 26 Respite Room
- 28 Emergency Services Facility Expansion + Renovation
- 30 Capital Campaign
- 32 Donor Spotlight
- 33 Strengthening Support for IMH
- 34 Golden Key Club
- 36 Board of Directors

38 DISBURSEMENTS & FINANCIALS

FY23 equipment purchased, projects supported, income, and expenses

40 PAST SUPPORT TO IMH

Comprehensive list of equipment purchased and projects supported dating back to 1989

43 DONORS

IMHF business and individual donors, FY20 through FY23



LOOKING BACK

MAJOR PROJECTS

FISCAL YEARS 2020-2023



MEREDITH AND JEANNIE RAY CANCER CENTER

In 2006, Meredith and Jeannie Ray made a substantial, initial gift, helping establish the Cancer Center. Subsequently named the Meredith and Jeannie Ray Cancer Center, IMH built a sizable facility capable of treating a variety of patients. It is unusual for a rural hospital of IMH's size to have a cancer center, with a state-of-the-art linear accelerator (LINAC), coupled with precision positional accuracy for treating a variety of tumors. IMH's latest LINAC is the third paid for by the Foundation's Ray of Hope fund. Gifts from other donors supported renovation of the infusion area, creating seven individualized spaces equipped with massaging and warming chairs in a private, comfortable environment. Other gifts have been used to develop a very comfortable waiting area for the loved ones of patients receiving care.



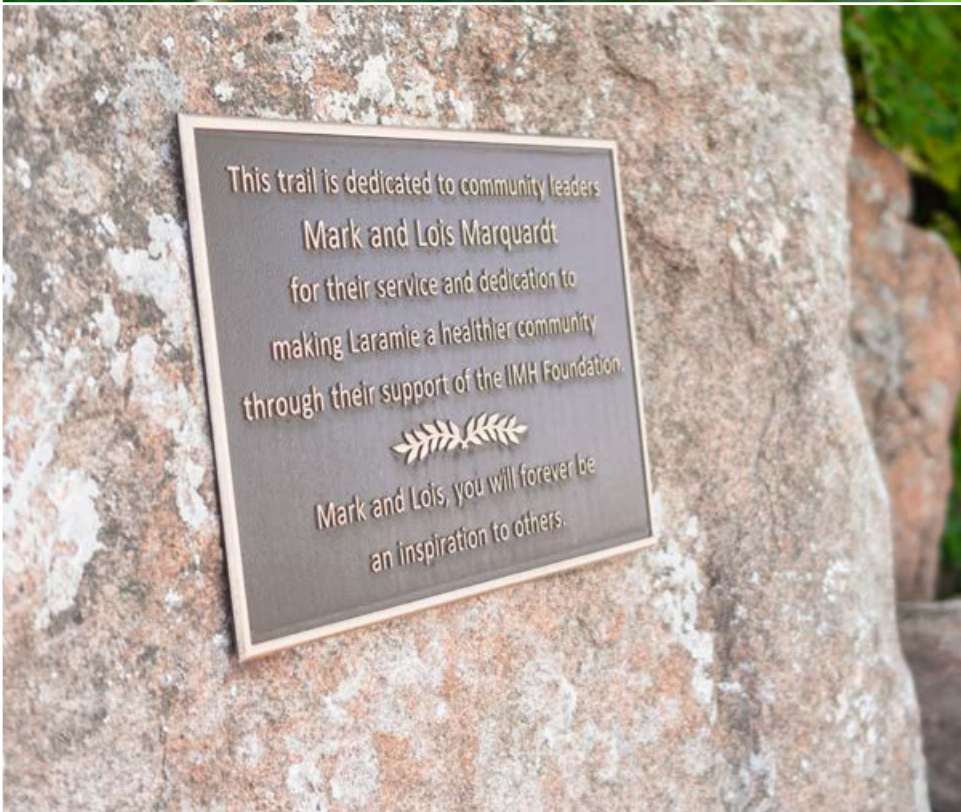
7 INDIVIDUALIZED SPACES

EQUIPPED WITH MASSAGING AND WARMING CHAIRS IN A PRIVATE COMFORTABLE ENVIRONMENT

DIALYSIS UNIT

In 1999, the Foundation purchased the first two dialysis machines which has grown to nine units supporting renal care. Board certified nephrologists oversee patient treatment delivered by a team of nurses led by a nephrology-certified nurse. But renal care is more than dialysis. Staff counsel patients on specific nutritional needs and social services support. While undergoing treatment, patients have comfortable chairs with individualized televisions, helping to make treatment time move more quickly.





MARQUARDT GARDEN

Mark Marquardt was one of the original board members of the Foundation. He served in all executive positions, including President. He was a long-term member of the Finance Committee. Mark and Lois were also La Grand Fleur Hosts. Recognizing the importance that IMH and the Foundation played in the Marquardt's lives, their children established the Marquardt Garden in the northwest corner of the hospital grounds. With a secluded large boulder backdrop and permanent bench, the garden is an intimate place for contemplation by families and others using the hospital.

GUEST HOUSE

It was recognized by the Foundation that a facility, near the hospital, to house the families of out-of-town patients was needed. Out of this recognition came the Guest House, a capital campaign supported project. The Guest House was built with the goal of providing exceptional care to patients, families, and friends in mind. This home allows families to truly rest and recharge so they can better tend to their loved ones and approach healthcare matters with a clear mind. The Guest House includes 24-hour a day visiting hours for patient's family and friends, and restaurant style dine-in and take-out food available daily.





EMPLOYEE RELIEF FUND

During the pandemic, the Foundation developed a specific fund supporting IMH employees needing financial assistance with certain critical expenses due to pandemic-related job losses. \$50K was allocated and \$41,654 was spent in FY20-21 to support IMH employees. The Foundation also supports continuing education through the Employee Assistance Fund, helping employees remain current in their area of care.

\$41,654

PROVIDED TO EMPLOYEES TO ASSIST WITH BILLS DURING THE PANDEMIC

THE GIVING TREE

The Foundation team collected and distributed almost 400 items for IMH employees and their families this past holiday season, including gifts, clothing, and 14 food baskets. IMH employees, the Foundation board and staff members participated and assisted with the festive project.



71 PEOPLE
FROM 17 FAMILIES
WERE HELPED





LOOKING BACK

MAJOR EVENTS

FISCAL YEARS 2020•2023

LA GRANDE FLEUR

For 36 years La Grande Fleur has been the major fundraising event for IMHF. Millions of dollars have been raised through ticket sales, the associated silent auction, and various “paddle raises.”

Thirty-six couples have served as hosts. Over the years, many themes have been used, making each La Grande Fleur unique. A long social hour, “shopping” silent auction items, a great meal, and dancing are hallmarks of each evening. Over the years the success of this event has been due to many businesses and individuals purchasing tables to entertain guests and family. La Grande Fleur fundraising contributed to the Foundation’s purchase of dialysis machines; supported renovation for the Cancer Center’s entryway and patient care area; helped fund continuing education for patient-facing IMH employees; assisted in maintaining the Guest House; and many other projects. Finally, funds raised by the most recent La Grande Fleur events will provide substantial funding to the Emergency Services Facility Expansion and Renovation project.

36YRS

SUPPORTING
IVINSON
MEMORIAL
HOSPITAL





Thanks to the

**36 COUPLES WHO HAVE
SERVED AS HOSTS
OVER THE YEARS**





GROUNDBREAKING CEREMONY

In May, the IMH and the Foundation celebrated the groundbreaking of the Emergency Services Facility Expansion + Renovation project. The ceremony was featured on the front page of the Laramie *Boomerang* and picked up by the *Wyoming Business Report* and other online outlets.



A special thank you

TO THOSE BOARD MEMBERS WHO
ATTENDED THE CEREMONY.



HOSPITAL WEEK: FOUNDATION FRIDAY

New Beginnings

In May of 2023, the Foundation distributed to employees 200+ flowers and plants—with custom-made thank-you cards to Ivinson Employees to recognize their care of our patients day in and day out. The Foundation staff delivered the plants throughout the hospital during the afternoon and night shifts.





1973 CAPSULE OPENING

The Foundation and IMH opened a 50-year old time capsule in March of 2023. The capsule was placed when IMH moved to its current location on 30th Street. Surrounding the capsule was evidence of how the Foundation and Hospital have worked together over the past four decades to enhance the care of patients, including the linear accelerator, surgical robot, and more.





SPORTSMAN RAFFLE

In its 10th year, the Sportsman Raffle is a major fundraising event encouraging those who enjoy outdoor activities to participate and support the Foundation. The event brings together outdoor-loving people who participate in a meal and series of raffles. In addition to various items, such as sporting rifles and shotguns, other items like guided hunts, fishing on secluded private waters, and float trips are raffled off. Major gifts are donated as raffle items. Over the years, the Sportsman Raffle has raised well over \$1 million and is the Foundation's second largest fundraiser.

OVER
700
PEOPLE IN
ATTENDANCE
IN 2023

OVER
\$1M
RAISED OVER
THE YEARS



HEALTH LINKS GOLF TOURNAMENT

This 18-hole scramble tournament is fun. Teams from various businesses, families, and individuals placed into impromptu teams play a round of golf with extra games thrown in. The tournament always fills up with participating teams, who after the rounds are over, come back to the clubhouse for lunch, raffles and other prizes. It is a major fundraiser for the Foundation, having been in existence for 25 years. In the past decade, proceeds from this event have been committed to the Meredith and Jeannie Ray Cancer Center. In 2022, the Foundation celebrated its highest gross revenue for this event, with special support from key donor Bill Werner. Bill served as the event sponsor in 2022—and contributed the most in the events' history. Board Member and former IMHF President Duane Cattles has been the long-term chairperson for this event—a major commitment on his part, with substantial support by the staff.

25 YRS
SUPPORTING IMH

Thanks to
EVENT SPONSOR
BILL WERNER



The background is a teal color with a close-up photograph of green leaves on the right side. A semi-transparent white rectangular box is positioned in the upper middle section, containing the text "LOOKING FORWARD".

LOOKING FORWARD

NEW DIRECTIONS



RESPIRE ROOM

Sometimes a patient, in critical condition with the end of life near, is admitted to IMH. In these cases where hospice care is not an option, the patient must continue receiving care at IMH. The Foundation helped build an extraordinarily welcoming room for loved ones supporting such patients in the hospital. The Respite Room is filled with comfortable furniture, internet connectivity, television, fireplace, and separate restroom facilities.



**FUNDING FOR THIS SPACE
CAME FROM PROCEEDS
RAISED DURING THE IMHF
SPORTSMAN RAFFLE
EVENT AND MATCH
PROVIDED BY A MAJOR
DONOR, OLD ELK RANCH.**



EMERGENCY SERVICES FACILITY EXPANSION + RENOVATION

Albany County, Saratoga Valley in southern Carbon County, and Jackson County, Colorado are all supported by the Emergency Department at IMH. Whether supporting illness, accidents of all types or sudden medical emergencies, the doctors and staff provide expert care to all. Originally designed for about 8,000 visits yearly, the Emergency Services Facility now provides care to well over 12,000 annually. IMH's top priority is to renovate and expand the facility, allowing it to handle up to 15,000 visits per year. In this renovation the Emergency Services Facility will expand from about 8,000 sq ft to slightly over 13,000 sq ft. The number of service rooms will increase from eight to thirteen, four with special ventilation capable of handling highly contagious pathogens. Specific behavioral health areas will be built and improved connectivity to the ambulance bay will be completed. The waiting area will be enlarged and made more comfortable, with special space for those accompanying patients requiring critical care.





The Capital CAMPAIGN

With our community continuing to grow, we have an urgent need to address the rising demand for emergency services. The Ivinson Memorial Hospital Foundation launched our capital campaign earlier this year in support of funding the Ivinson Emergency Services Facility Expansion and Renovation. This is the most aggressive fundraising project in the Foundation's history. Design work is completed, with an estimated total cost of \$14 million. The State of Wyoming has granted \$3.125 million to this project, recognizing its need.

The Foundation's Capital Campaign Committee, co-chaired by Gary Crum and Karen Saunders have worked tirelessly with the Foundation Executive Director, to reach out to the community for donations supporting this important project. Also, in the planning and execution of fundraising events such as the Sportsman Raffle and La Grande Fleur. A generous new donor, John Evans, has committed to match all gifts received by December 31, 2024 to the Emergency Services Facility dollar for dollar to a total of \$5 million, therefore doubling all gifts.

Beginning in June 2023, Bill Gern assumed the role as Capital Campaign co-chair as Karen Saunders stepped down after assisting with the campaign efforts for over a year.

LAUNCHING

THE IMH EMERGENCY SERVICES
FACILITY RENOVATION &
EXPANSION PROJECT



Photo credit Carol Ryczek, Laramie Boomerang

DONOR SPOTLIGHT:

With great appreciation we honor and thank John Evans.

John Evans moved to Laramie, Wyoming at the age of 12 and grew to love and appreciate the Laramie Valley. He graduated from Laramie High School and continued his education at the University of Wyoming studying Engineering. After two years, Mr. Evans was drafted and served in the Army Ordinance from 1968-1971, stationed in Europe. Upon completing his service, John returned to the University of Wyoming and graduated with an MBA in 1974. That same year he married Janey Hampton of Alexandria, Virginia. After traveling and living in several states pursuing career opportunities with various nuclear energy companies, John and Janey returned to Laramie in 1999 making it their home.

During his time in Laramie, Mr. Evans grew as a successful businessman while remaining actively engaged in the community. He dedicated 17 years as a member of the Rotary Club, serving on the organization's membership committee.

Sadly, in spring 2023, Janey passed. John & Janey were married for 49 years. Following her passing, and because of John's interest in giving back to his community, he connected with the Iverson Memorial Hospital Foundation to support the Capital Campaign helping IMH's Emergency Service Facility Expansion and Renovation project in honor of his late wife Janey. John is involved in several ongoing charitable projects in the Laramie community, and we are pleased to partner with him on this very important project.



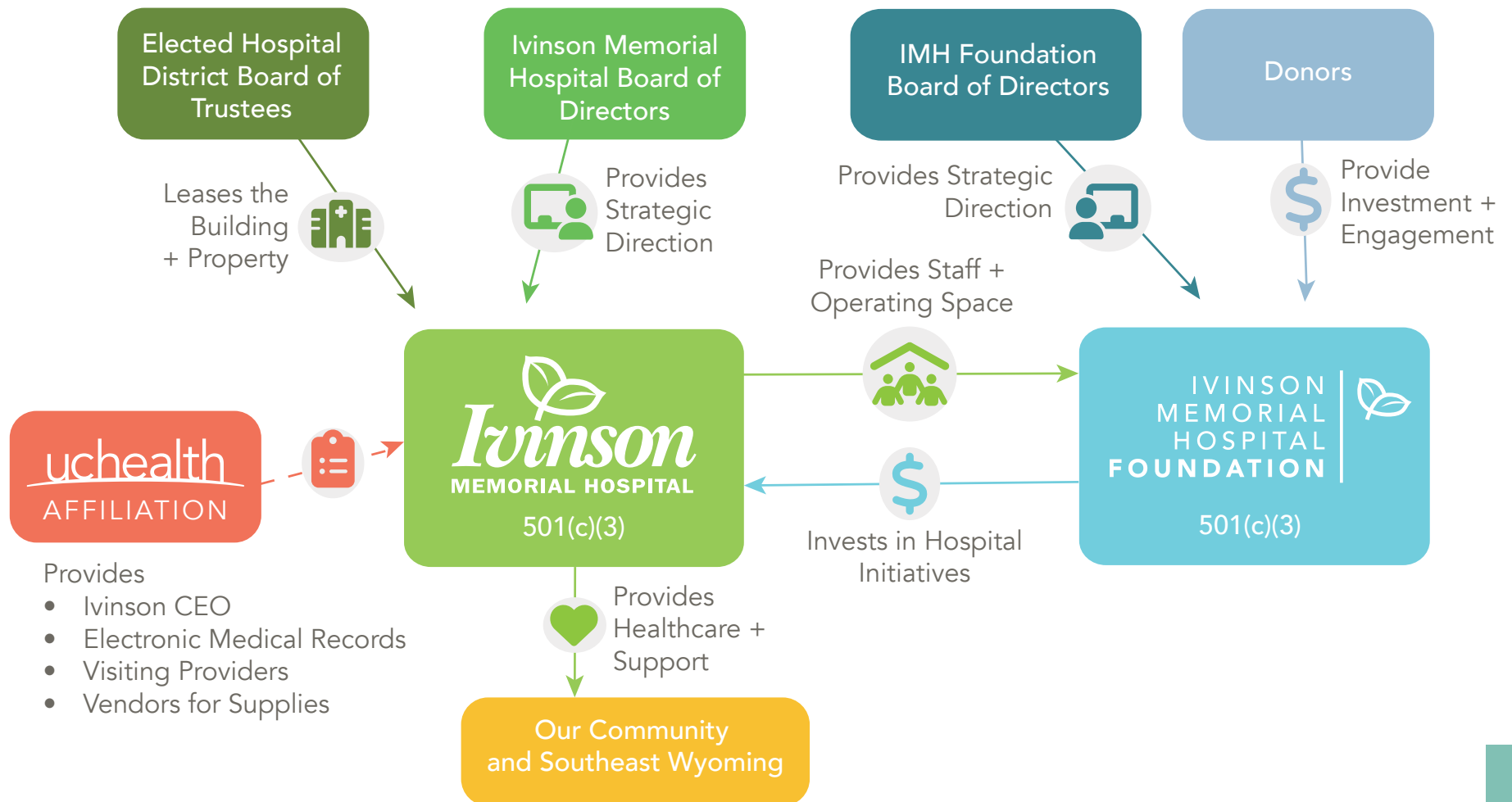
\$5M
DONOR
MATCH

JOHN EVANS

STRENGTHENING OUR SUPPORT OF IMH

A revised Memorandum of Understanding between IMH and IMHF was signed in 2021, reaffirming and strengthening our relationship. Our staff work closely with the IMH Executive Committee and support the hospital's mission to serve our community.

The Executive Director has also shifted to securing private donations, trust and estate gifts. Event committees and volunteers provide more support to run the Foundation's annual events.



GOLDEN KEY CLUB

The IMH Foundation Board of Directors updated the Golden Key Club Policy in February of 2021 clarifying membership requirements and expectations, as well as simplifying tracking of eligibility. All previous individual and business members were grandfathered in. Members of the Golden Key are historically the Foundation's major donors. Due to the pandemic, Golden Key was virtual; however, in November of 2022 the Foundation once again hosted a Golden Key event inviting members and emeritus Directors to the Cavalryman Steakhouse. The meeting provided an opportunity to again thank Golden Key for their support.





**MANY
THANKS TO
THE GOLDEN
KEY CLUB
SUPPORT OF
THE YEARS**

BOARD OF DIRECTORS

The IMH Foundation Board of Directors is comprised of Laramie Community members who guide strategic planning, manage investments and funding distributions, and advocate for the hospital.



BILL GERN
President



KEM KRUEGER
Vice President



REBECCA MILLER
Treasurer



NICK HAUSER
Secretary



RANDI DOWNHAM
Member-At-Large



JOE STEINER
Historian



KIM NEGICH
Past President



DOUG FAUS
IMH CEO



MEGAN GOETZ
Legal Counsel



Jack Bedessem



Sharleen Castle



Duane Cattles



Craig C. Cook



Gary Crum



Robbie Darnall



Jill Dodds



Nancy English



Kandi Furphy



Jim Geesey



LJ Guthman



Ken Hamilton



Walt Hammtree



David Jones



Tom Mangan



Kelly Milam



Sherri Niss



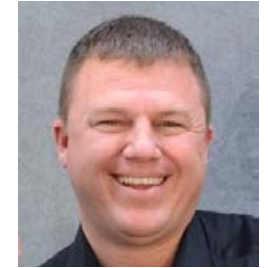
Terry Roark



Sherrie Rubio-Wallace



Randal Six



Brandon Specht



Nancy Stutzman



Eric Uhlman



Jack Ullrich



Guy Warpness



Brad Walgren



Kim Westbook

HONORARY MEMBERS:

Cattles, Duane
Clark, LW Bud
Devin, Irene
Kohler, Kathryn
MacMillan, Hoke
McGraw, Trixie
Nord, Tom
Van Ekeren, Ron

EMERITUS MEMBERS:

Furphy, Dan
Greaser, Paul
Saunders, Karen
Schaefer, Jay
Shuster, Janice
Spiegelberg, Emory

**MANY THANKS TO THOSE WHO SERVED
ON THE BOARD OF DIRECTORS.**

We are grateful for your service.

Upon resignation from the IMH Foundation Board of Directors, Honorary and Emeritus status is given to Board member who have contributed a significant amount of time and/or donated at a higher giving level.

*Note: Photos represent IMH Foundation Board of Directors as of June 30, 2023

DISBURSEMENTS TO THE HOSPITAL

2020	Infusion rooms remodel	\$152,350.00	2021	Sonosite Edge II and Affintiy 4 Birthing Bed.....	\$53,660.00
2020	Lab microscopes.....	\$20,000.00	2022	Upgrades for various departments	\$14,013.00
2020	Novii monitor for family care	\$4,999.00	2022	Healing Hands fund and Guest House patient assistance for the Cancer Center.....	\$2,167.00
2020	Clamps and bins for sterile processing	\$4,613.00	2022	Fetal monitor.....	\$16,431.00
2020	Donor screens construction	\$30,488.00	2022	BHS educational materials.....	\$3,236.00
2020	Upgrades for various departments	\$15,361.00	2022	Spacelabs Central Station Qube Monitors	\$60,000.00
2020	BK stepper	\$13,860.00	2022	Reallocate Breast Boutique Grant Fund to IMH.....	\$5,543.00
2020	Dosimeter for Cancer Center	\$5,600.00	2023	Behavioral Health security cameras	\$11,800.00
2020	Belly Board for Cancer Center	\$6,500.00	2023	CAE Ares manikin	\$38,707.00
2020	Powershare program for radiology	\$10,000.00	2023	Rehabilitation Services Sara Plus device.....	\$7,967.00
2021	Rachel's Gift Infant Bereavement Program ...	\$2,000.00	2023	Telemetry monitor.....	\$15,000.00
2021	Well health communication.....	\$40,837.00	2023	Pediatric Phototherapy equipment	\$26,326.00
2021	Inpatient support services	\$39,288.00	2023	Linear accelerator—Varian Medical Systems/Oncology systems	\$1,000,000.00
2021	Dietary CBORD project.....	\$40,000.00	2023	Healing Hands fund and Guest House patient assistance for the Cancer Center.....	\$4,193.00
2021	Upgrades for various departments	\$30,823.00	2023	Rehabilitation Services Sara Plus device.....	\$8,342.00
2021	CoreU spinal surgery drill.....	\$88,573.00	2023	BHS education materials	\$3,269.00
2021	Linear accelerator—Varian Medical Systems/Oncology Systems.....	\$700,000.00			
2021	Healing Hands fund and Guest House patient assistance for the Cancer Center.....	\$1,410.00			

FINANCIALS - FY23

REVENUES

Fundraising.....	\$309,103.00
Donations.....	\$253,824.00
Grants/Other.....	\$23,300.00
Total Income for FY23	\$586,227.00
Total Commitments/ Pledges to the Campaign	\$1,510,514.00
IMH Provided Support	\$315,000.00

FOUNDATION DIRECT EXPENSES

Investment Fees.....	\$70,176.00
Event Expenses.....	\$86,227.00
Operating Costs.....	\$77,714.00
Capital Campaign Operating.....	\$17,738.00
Total Operating Expenses.....	\$251,855.00

INVESTMENTS

Investment Dividends & Proceeds	\$582,743.00
Market Appreciation.....	\$1,480,360.00
Total Investment Value	\$20,273,943.00
Accounts Receivable.....	\$63,510.00
Fixed Assets (land and art).....	\$240,472.00
Total Foundation Assets	\$21,980,618.00

PAST SUPPORT TO IMH

1989	ICU remodel.....	\$50,000.00	2008	Cancer Center Computer upgrade	\$45,983.00
1992	Fetal monitoring system.....	\$50,000.00	2008	ECF chairs	\$3,502.00
1994	Special procedures	\$50,000.00	2009	Surgery suite upgrade	\$174,000.00
1998	Dialysis.....	\$150,000.00	2010	Miscellaneous disbursements	\$20,608.00
1999	Stereotactic	\$40,000.00	2010	Waiting room upgrades	\$42,639.00
2001	Ultrasound system.....	\$170,000.00	2011	MRI	\$250,000.00
2001	Cancer Center—linear accelerator	\$2,335,000.00	2011	Waiting room upgrades	\$41,732.00
2002	Brachytherapy	\$115,000.00	2011	Miscellaneous disbursements	\$78,226.00
2003	Endoscopic equipment	\$168,614.00	2011	Colposcope for emergency room	\$15,645.00
2004	Family Care Unit—warming beds and birthing units	\$160,000.00	2011	Bench for emergency room.....	\$2,000.00
2005	Surgery tables.....	\$150,000.00	2011	Wheelchair scale and chairs for ECF	\$7,230.00
2006	Anesthesia equipment.....	\$150,000.00	2011	Cardiopulmonary chairs.....	\$2,065.00
2006	Space Labs cardiac telemetry	\$180,000.00	2011	Artwork for Cancer Center	\$3,273.00
2006	Dialysis equipment.....	\$118,122.00	2011	MD’s consulting area/waiting areas.....	\$3,264.00
2006	Imaging equipment.....	\$250,000.00	2012	Planetree upgrades.....	\$125,000.00
2007	CT and MRI.....	\$250,000.00	2012	Guest House	\$1,300,000.00
2007	Oncology computer upgrade	\$23,340.00	2012	Dialysis exercise equipment	\$692.00
2008	Breast Stereotactic & MR.....	\$250,000.00	2012	Linear accelerator replacement	\$2,500,000.00
			2013	Cancer Center Jeannie’s Boutique.....	\$1,690.00

PAST SUPPORT TO IMH, CON'T

2013	Miscellaneous disbursements	\$99,668.00	2018	Women inCourage	\$15,446.00
2013	Art & furniture for expansion	\$101,000.00	2018	Linear accelerator	\$250,000.00
2013	Inpatient Rehab gym & sleep lab furniture	\$20,000.00	2018	Walkway to medical offices at Ivinson Support	\$227,000.00
2014	Mobile GE x-ray	\$124,482.00	2018	Radiology Department/Breast Imaging Center	\$181,000.00
2014	Dialysis exercise equipment & chairs	\$7,017.00	2018	Cancer Center remodel	\$505,000.00
2014	Cancer Center computers, TV's & mounts	\$37,623.00	2019	Women inCourage funded the following: Bariatric Recliner	\$3,530.00
2015	Infant security system	\$89,000.00		CuddleCot	\$3,164.00
2015	ICU patient helpers	\$8,369.00		Essential Oil program for the Extended Care Facility	\$1,914.00
2015	Fetal monitor trainer & labor progress model	\$847.00	2019	Telestroke, initial start up year	\$10,000.00
2015	Admitting chairs	\$621.00	2019	Elastography ultrasound program	\$24,900.00
2015	Sandy Joy-Kris Kramschuster scholarship	\$72,890.00	2019	BK ultrasound machine and program	\$65,308.00
2016	Rehab upgrades	\$110,258.00	2019	Fulfilled Grateful Patient Program requests	\$11,436.00
2016	Atrium trees	\$14,013.00	2019	Breast Boutique, grant funded from the Wyoming Breast Cancer	\$15,000.00
2016	Children's memorial	\$11,190.00	2019	Scholarships awarded	\$16,276.00
2017	Cancer Center remodel	\$505,000.00	2019	Healing Hands fund, patient support for those involved with cancer treatment	\$1,170.80
2017	Radiology enhancements	\$181,000.00			
2017	Surgical robot	\$24,000.00			

DONORS

A & J Plumbing
A.K. Day
A/C Electric
Ralph Abell
Ryan Abell
Absolute Acrylic Spa
AC Electric
Ace Hardware
ACPE Federal Credit Union
David Aguirres
Albany County School District #1
Doug Alexander
Aligned Providers Wyoming
Deanna Allen
Linda Allgeier
ALSCO
Altitude Chophouse & Brewery
Altitude Fitness
ANB Bank
Claire Angele
Antelope Meadows Mini Storage
Jennifer C. Anton
Teresa Arens
Art & Soul Pottery Studio
Asbestos and Technical Services
Terry Aschenbrenner
David Auburn
Chaz Avila & Josh Shenefelt
Benjamin Ayers
Bailey Bader
Effie Bader
Susan Ballard

James Bands
Bankcard
Lynn Barczuk
Scarlett L. Barnes
Vincent & Cheryl Bath
Matt Baumgartner
BDO
Caitlin M. Beck
Arthur Becker
Bradley W. Becker
Jack & Marjorie Bedessem
Walt Beliaj
Butch Beman
David T. Bennett
Lysbeth B. Bennett
Fawn Benson
Joe Benson
Lynn Benson
Thomas Berkeygheiser
Thomas Berner
Marsha Berridge
Alaina Besneatte
Jeremy Bey
BH Contracting Services, LLC
Big Dipper Ice Cream Shop
Big Hollow Food Co-Op
Bighorn Metalworks Inc.
Bill Biles
Don Black
Black Hills Energy
Kathryn Blaney
Linda Blinde

Blooming Lemon
Blue Cross Blue Shield
Lawrence A. Bobbitt
Abe Bobbitt
Erin Bodine
Eric Boley
Jay & Mallory Bond
Bond's Brewing Co.
Eleanor Bonnes
Robert & Elenor Bonnes
Daniel Boodicker
Lawrence Boram
Justin Boschee
Mike & Dee Bott
Donald W. Boyd
Ken & Bonnie Braisted
Brenda Branscom
Suzanne Brawley
Thelma Bromley
Dan & Julie Bromley
Kristine M. Brosmire
Don J. Brosz
Dianne Brown
Robert Brownell
Gary Browning
Brush Creek Ranch
Carole Buckalew
James Bullock
Candace M. Burch
Tom Burman
Mary Burman
Allen & Marianne Businga

Roger Butcher
Billie Bymers
Louise S. Caldera
Stephen Cameron
Kimberly Cameron
Donald Campbell
Robert Campbell
Douglas Campbell
Angelita Candelaria
Lois L. Cannell
Nancy Carder
Marten Carlson
Andrew Carollo
Herbert Carpenter
Stephanie Carter
Duane Cattles
Linda Cavalli
Tracey Cavsey
Certified Inspection Services
Rick Chadek & Kate Feeley
Chalk 'N Cheese
Cameron R. Chavez
Jacob Chavez
Cheyenne Frontier Days
Jim Clay
Climate Control Company
Richard Closson
Harold Colby
Frances Colby
William E. Coleman
Howard Colling
Family Comer

DONORS, CON'T

Lauri Conley
ConnectGen
Jonna Connett
Adalaide Cook
Craig Cook
Margaret & Dennis Cook
Cook and Associates
Gregory Courson
Cowboy Glass
Cowboy Locating, LLC
Emma Cowdery
Sue Cowdin
CPA Group of Laramie
Nicole Crawford
Dr. Chris Cribari
Scott Crist
CrossFit 7220
Gary & Lois Crum
CSNY Inc
Michael Cunningham
Curiosity Shoppe
Sherry A. Curran
Patti Curry
Robyn Curtis-Rice
CVS Consulting
Les & Robbie Darnall
Charlotte & Maron Davis
Nettie Davis
Debra Dawson
Zachery Deberard
Denise Deem
Delta Dental of Wyoming

Denali Water
James Derrisaw
Jerry P. Devin
Jeff Dietzel
Nathan Dirisio
Jenna Dixon
Lonny Dobler
Eric Dodd
Jeff & Jill Dodds
Dodds Shoe Co.
Charles W. Dolan
Domino Construction
Alea K. Doolittle
Tom Doser
Donovan Downey
Keith B. Downey
Patrick & Colleen Downey
Tom Downham
Elyssa E. Dreher
DT Services
Duane Toro Real Estate
Pam & Sam Dunnuck
Rudy Duran
Karen Eaton
Gary Egge
Sandra Eike
Rachel R. Ellis
Josh Elsass
Nancy English
Kara Enyert
Reba Epler
Leif Erickson

Paula Eskam
Dale Eslinger
Salvatore Fallace
Sameera Fareed
Sheralyn Farnham
Kacie Faucheux
Doug & Lisa Faus
Kate Feeley
Jake & Sarah Felton
FIB System Foundation/Billings
Fidelity Charitable
Sharon K. Fields
Nancy Fillion
Megan B. Finkle
Sam & Sam Finkle
Lynn Finney
First Interstate Bank
Rebecca Fisher
Alan Fisser
Shawn Fletcher
W. Dean Flock
FNBO
Deby & Todd Forry
Sheri Franken
Chris Fraser
Fremont Electric
Sheryn & Ted Fritz
Frontier Cycles (HRD Enterprises)
Dan & Kandi Furphy
Tom Gabriel
Ted Gallegos
Bailey & Tyler Gallo

Rex E. Gantenbein
Aaron Garcia
Tammy Gardea
Pedro Gardea
Peter & Victoire Gardner
Carolyn Garrison
Michael K. Garver
Jim Geesey
Gem City Veterinary Services
Bill & Sharon Gern
GH Phipps Construction of Wyoming
Roberta Giffin
Megan Goetz
Shawna N. Goodman
Pete Gosar & Devon O'Connell
Joan Graham
Grand Ave Urgent Care
Grand Avenue Dental Center
Jane M. Greaser
Paul and Jane Greaser
Denise & Martin Greller
Gail Griffin
Groathouse Construction
Jerry Gruber
William C. Guenther
LJ & Chuck Guthmann
Ted Guzman
Brittany Hackney
Bryanna Hackney
Terry Hahn
Lujan Halcon
John & Laura Halewski

DONORS, CON'T

Cavin Hall
Steve Hallam
Glenn Halsey
Lucas Halverson
Hannah N. Hamblin
Ken Hamilton
Janet Hamilton
David Hansen
Mary Hardin-Jones & David Jones
Ken Hardisty
Betty J. Harnden
Eric Harnsberger
Susan Harnsberger
Aaron Harper
Jessica Harper
Jake Harris
Cara Harshberger
Haselden Construction
Nick Hauser
Jackie Hawks
HDR
Heggie Logging and Equipment Co.
Anna Helm
Karen J. Hepworth
Lindsay Herkstroeter
James Herrera
Samantha J. Herriott
Leilani Hesson
Robert Heward
Christina Hiegel
Jean A. Hildebrandt
Hilton Garden Inn Laramie

Doug L. Hixon
Shannon Hofferber
Holland & Hart, LLP
Dorothy Holloway
Austin Holmes
Patricia Hones
Dan Honick
Phil Howe
Robert R. Howell
Robert Huckvale
Kristi Hufty
Arlowe Hulett
Wanda Hulit
Kelly Humphrey
Samuel Hundley
Marc Hungerford
Carolyn E. Hurwitz
Angie Hyde
IMH Administration
IMH Board of Directors
IMH Business Office
IMH Cancer Center
IMH Dialysis & Cardio-Pulmonary
Departments
IMH Dietary
IMH Marketing
IMH Medical Records, Quality, and
Med Staff Services
IMH Patient Access Department
IMH Pharmacy Department
IMH Rehabilitation Department
Independent H/S Metal Inc.

Inspire Sleep
Interact Club
Kristy Isaak
Ivinson Medical Group
J. Vasquez Construction
J.C. Link
J's Prairie Rose
Diane Jackson
Jacoby Golf Course
Lydia Jaggard
Ardell Jarratt
Farrukh Javaid
Jonnie Jenkins
Morris E. Jenkins
Tammy Jensen
Tim Jette
Michelle R. Johnson
Paul Johnson
Johnson Auto of Laramie
James A. Johnston
David & Mary Jones
Jason Jones
Jeremy Jones
Leroy Jones
Dustin Joy
Valerie C. Joyce
Mary Kalinay
Brody Karhn
Opal J. Kelly
Jeanne & Keith Kennedy
Connie Kercher
Jane Kercher

Tom Kern
Susan Kersey
Cheryl A. Kiefer
Killian Florist
Sonya King
Emily Kingston
Cathy Kintner
Nicko Kleppinger
Chris Knudsen
Nicholas Kolb
Steve Kramschuster
Noni Krsh
Kem & Janelle Krueger
Charlie J. Ksir
Raymond Kunselman
Wade LaCount
Kathryn LaGrange
Troy Laird
Eunice Lambert
Brittany H. Landry
Colleen Lang
Laramie Automotive & Diesel Repair
Laramie Chamber Business Alliance
Laramie Dental Arts
Laramie Fire Department
Laramie GM Auto Center
Laramie Investment Co.
Laramie Jubilee Days
Laramie Land Company
Laramie Mechanical and Heating
Systems, LLC
Laramie Plains Federal Credit Union

DONORS, CON'T

Laramie Plains Lions Club
Laramie Police Department
Laramie Respiratory Service
Laramie Spinal Care Center
Ronald Leach
Chad LeBeau
Gerland & Maxine Lebeau
Kizzy Ledesma
Jim Lee
Marcia Lendar
Jody Levin
Andrea Lewis
LHS Volleyball
Jason & Linda Lillegraven
Oscar Lilley
Shirley Lilley
James R. Littlewood
Cody L. Livingston
Roberta C. Lockard
Nancy Lockwood
Denise Loose
Caroline J. Lopez
Taime S. Lopez
Ludwig Photography
Breann E. Lujan-Halcon
Luna Salon & Spa
Kevin Lundahl
James Lundquist
Virginia Madesen
Jon A. Madsen
Teresa Mahaffey
Carl Majewski

Thomas Mangan
Donna Marburger
Mike Markle
Rob & Tina Marquardt
Joe & Karen Marr
Jill M. Martin
Richard Martin Jr.
Martin/Martin Wyoming
Mary Lou Ellis/Ellis Ranch
Mary-Catherine Prehoda
Breann May
McAlister's Deli
Jacquelynn McCarty
Lisa & Ray McElwee
Mike McGill
Andie McGlocklin
Jim McGrath
Annabelle McNamee
John R. McPherson
Medicine Bow Technologies
Sterling Meier
Richard Melone
Miguel Mendoza
Rebecca B. Merrill
Mindy Meuli
E. Gerald Meyer
Mike Peel (Certified Inspection Services)
Eileen & Mike Milam
Dylan & Kelly Milam
Donna Miller
Rebecca Miller

Holly & David Miller
Mingles
Samantha J. Mizokami
Cathy & Mark Moen
Mary F. Monteith
Carol Moore
Dalton Moore
Tom Moore
Dean Moore
Dorothy Moore
Susan Moore
Terry Morgan
Dennis Morris
Cory & Terry Moss
Mountain West Farm Bureau
Denise Mullin
Nancy Munoz
National Christian Foundation
Gary & Kim Negich
Dave & Cheryl Nein
Marshall Nelms
Dan Nelson
Scott Newson
Nicholas & Tangeman, LLC
Bob Niemoller
Jim & Kristine Ninneman
Calvin & Sherrie Niss
Northridge Discount Liquors
Mary O'Flannigan
Stephanie A. Oland
Old Elk Ranch
Charles & Elinor Olsen

Ivan Olson
Linda G. Osterman
Rocky Mt. Power/Pacific Power
Alice Paintin
Mark W. Pajak
Palatium Hair Studio
Karen Panter
Levi Pantier
Caitlin Parks
Andrew Parsekian
Partner Services at Ivinson
Daniel Pasman
Eric Paul
Daniel Peel
Pence and MacMillan, LLC
Danielle & Lonnie Penner
Craig Perkins
Nicolette Perschino
Pete Lien & Sons
Matthew Peters
Helen Peters
David J. Petersen
Jen & Lars Peterson
Bob W. Pier
Barbara Pier
Deborah Pimentel
Jonathan S. Pischel
Candace Pisciotti
Nancy Platt
Lucas and Shannon Plumb
Pole Mountain Pharmacy
Shannon Polk

DONORS, CON'T

Poppy's
Joan Porter
Virginia Porter
Premier Bone & Joint Centers
Amanda M. Panches
Patrick Purcell
Purple Hippo, LLC
John Purviance, MD
Qdoba Mexican Grill
Quality IV Care
Patricia Radosevich
Barbara Ramlo
Katherine R. Ratigan
Rawstone Development
Chelsea Raymer
Ann F. Rebka
Charles Reher
Arienna Reher
Patsy Reihl
Cal & Janice Rerucha
Bret Reynolds
Ken Reynolds
Curtis Rice
Jerry Rice
Kymberly Riddle
Lidia Ridley
Grace Riedesel
Connie Riesland
Robin Riesland
John Rindler
Betty J. Ritter
Riverstone Bank, Laramie Branch

RML & Associates CPAs
Terry Roark
Clark Robbins
Tracy A. Roberson
Kurt Roberts
Lois Roberts
Raymond & Bonnie Robertson
Mike Rodgers
Cheryl Rodgers
Diana Roising
Sheridan Roling
Tammy Rompolo
Nicole Rooney
John H. Rowland
Rowland Associates
Sherrie Rubio-Wallace
Erin Rumsey
Melissa Samp
Beth Sanchez
Jessica Sanchez
Emily P. Sanders
Angela Sanford
Lawrence Saunders
Karen Saunders
Penny Saunders
Mike J. Scandalios
Jay D. Schaefer
Tony Schaneman
Marie Scheaffer
Alan & Roberta Schimek
Michael Schluck
Alice Schnitker

Linda Schnitker
Joshua & Katlyn Schultz
Megan Schwantes
John & Jenna Scozzafava
Chris Seago
Security First Bank
George D. Semenov
Andrea Senior
Carl Shaffer
Sherry Shaffer
Denton Shaw
Mary Shaw
Marie Sheaffer
Shawn Sheen
Roxann Shumaker
Janice Shuster
William Silvrants
Vincent Siren
Randal Six
Dawn D. Skinner
Peter Skorcz
Geri Skuhr
James J. Slater
Joseph Slattery
Donald A. Smith
Grady Smith
Sherrill Smith
Amy Smith
Snowy Range Ski Area
Snowy Range Vision Center
Abigail Soddy
Joan Smith Sonneborn

Soroptimist International of
Laramie
Joe Southards
Lowell K. Spackman
Brandon & Marilyn Specht
Brianna Specht
Spiegelberg Family
Spine & Injury Clinic of Laramie
Germaine St. John
James Stafford
StagePoint Federal Credit Union
Tim Stamp
Tracy Starkey
Joe & Sue Steiner
Mollie Stinson
Gloria Stoddard, FNP
Stonehouse
Lynn Stubbs
Studio R.E.D.
Stutzman Construction
Sugar Mouse Cupcake House
Stork Support
Sweet Pickles
Donald & Bonnie Swiatek
Synergy
Kyle Tallent
Matthew Taylor
Kimberly Taylor
Grace Taylor
Michela Telford
Amy Terrell
Tracy Terrell

DONORS, CON'T

Galand Thaxton
Thaxton Insurance Agency
The Alibi
The Alice Shaffer Living Trust
The Brown 'N Gold Outlet
The Butcher Block, LLC
The Church of Jesus Christ of Latter-day Saints
The Family Trust of Conrad J. Kercher
The Mortgage Source Inc.
The SLAM Collaborative, Inc.
The Still Package Liquors
Kelly J. Thom
Donna & Tanya Thompson
Duane & Marcy Toro
Nadia M. Torok
Erich Toth
Tough Guys
Michael Tremel
Trihydro Corporation
Fred Turner
Michele Turner
Two Mountain Construction
Two Mountain Taxidermy
UBS Institutional Consulting Group
UCHealth
Eric J. Uhlman
John Ullrich
Undercover Bed and Spas
UniWyo Federal Credit Union
UW Art Museum
UW Athletics Dept. Cowboy Joe

UW College of Health Sciences
UW Cross Country
UW President's Office
Aaron Van Buren
Bryan and Stefanie Van Buren
Josh Van Dyck
Ron A. Van Ekeren
John Vandell
Alan Ver Ploeg
Kim D. Viner
Joe Vitale
Voltech Electric
Linda Waggener
Brad Waldbauer
Walgren Dental Arts, PC
David E. Walrath
Christel B. Walrath
William T. Ward
Guy Warpness
Shadow Warpness
James Wasmuth
Sueann Wasmuth
Fred C. Waters
Ferne Watson
Amy Weaver
Anne Weddle
Weifield Electrical Contracting
Randy Weigel
William Werner
Tom & Lora Wesche
Debora L. Wessels
West Laramie Fly Store

Western States Bank
Western Water Works
Laura Lea Westlake
James & Sagan Wheeler
Tanya Wheeler
Phyllis Whitmire
Pamela Wickkiser
Katherine S. Wilkins
William and Glenda Schmidt
Living Trust
Maxine Williams
Mary Williams
Tyler Willis
Brooke Willis
Bill Wilson
Flewellyn & William Wilson
Hannah Wilson
Deborah Wiltse
Jessica Winchell
Kelsey J. Wine
Seth Wittke
Deryl & Susan Woirhaye
Ted M. Wojtysiak
Cameron H. Wright
Erica Wright
Paul Wright
Travis Wroblewski
WY Society for Clinical Lab
Science
Spencer M. Wyant
Wyoming Bank and Trust
Wyoming Hospital Association

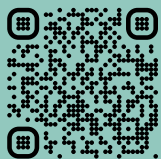
Wyoming Mechanical
Maintenance, LLC
Wyoming Oncology
Professionals, LLC
Wyoming Secretary of State
Wyoming Sports Properties
Wyoming Wood Stove
WyoTech
Beth Young
Burk Young
Holly Zajic
Melissa Zeglen
Mel Zenoni

Many thanks

**TO OUR DONORS;
WE ARE GRATEFUL
FOR YOUR SUPPORT**

WAYS TO GIVE

ONLINE



Make a payment using our secure server at www.imhfoundation.org/donate.

PHONE

Call us during normal business hours at (307) 755-4520.

MAIL

Send payment to:

IMH Foundation
255 N 30th St.
Laramie, WY 82072

Thank you!

Your gift is tax deductible as provided by law.